



**Ministry of Water and Environment
Joint Sector Review 2017/18**

**Environment and Natural
Resources Sub-sector
Directorate of
Environment Affairs**

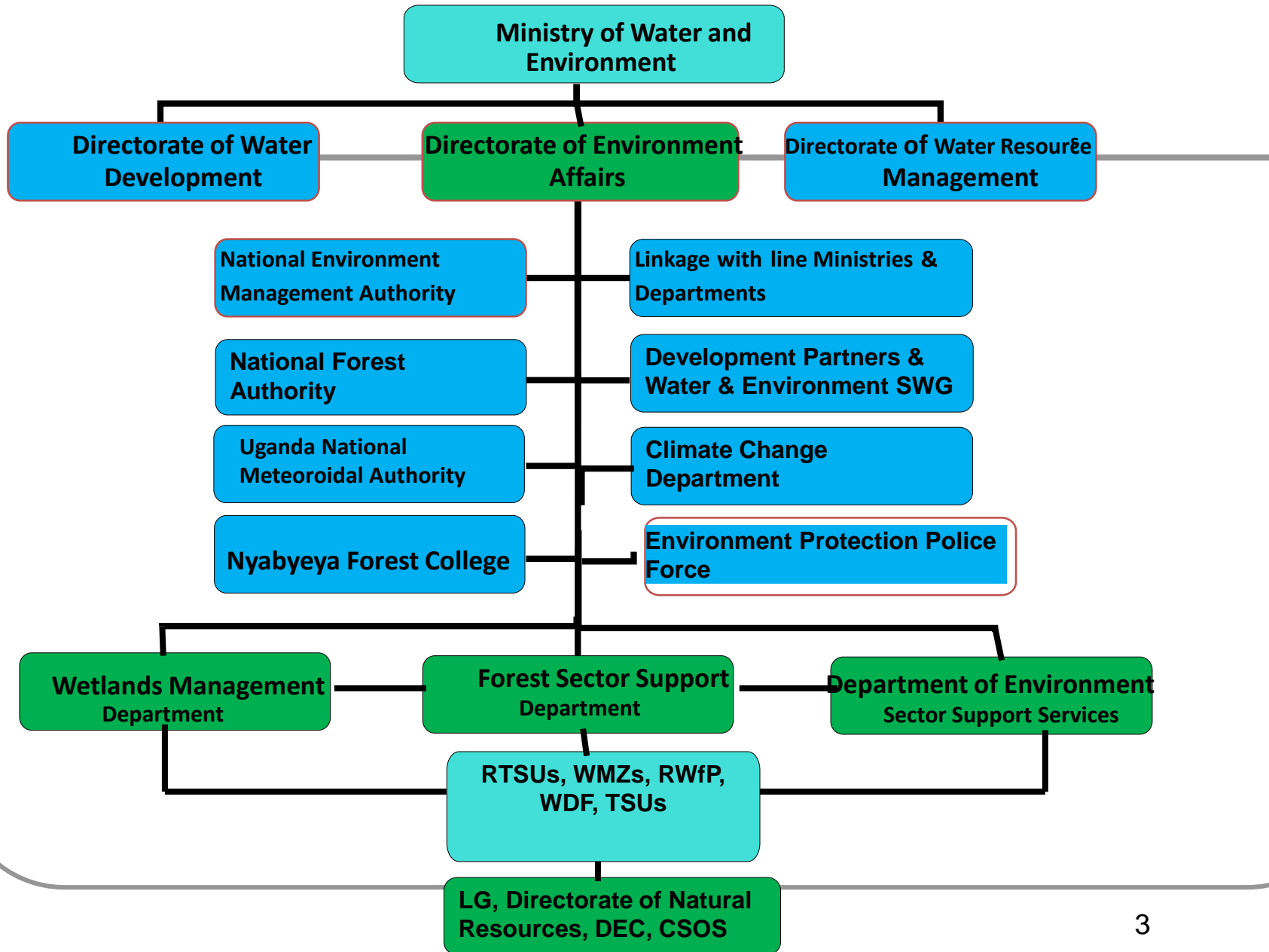
Outline

1. **Introduction**

2. **Performance: Key Highlights**
3. **Performance trends**
4. **Progress on Undertaking 1:
Mainstreaming Environment**
5. **Challenges and Recommendations**
6. **Key opportunity.**
7. **Proposed Undertaking**

1. Introduction

Structure of the Directorate of Environment Affairs



2. Performance: Key Highlights

1. Policy, Legal and Institutional framework

- ❑ NEA under review now with Parliament-NRC for further consultation.
- ❑ NEMP reviewed and harmonized, awaiting finalisation of the Regulatory Impact Assessment
- ❑ Wetlands and Forestry Policies; and Wetland Draft Bill and Forestry and Tree planting Act are under review-Consultants.
- ❑ Guideline for restoring wetlands developed and disseminated to Stakeholders.
- ❑ Feed back and Grievance mechanism for REDD+ completed.
- ❑ 04 Regional offices set up and 12 staff of Wetland Officers, Forestry and Environment Officers deployed to operationalize the ENR mainstreaming process.
- ❑ Hot spot ENR areas under WSS sub-sector for restoration mapped.
- ❑ Joint catchment planning and budgeting with WSS Technical officers at the deconcentrated structures is ongoing.

2. Performance: Key Highlights

2. Restoration and protection of degraded ecosystems

- Over 658.4km of wetlands, Mabira CFR boundary were demarcated with pillars, beacons and live markers.
- Over 3,890.4 Ha of wetlands, river bank, streams and forest reserves restored.- including Lubiji
- 100 kms of roadsides were planted with trees of assorted species.
- 3 NO. of wetland management plans developed covering over 20,500Ha.
- 56 Forest Management Plans were developed and 50 Private Forests were registered.

2. Performance: Key Highlights

3. Plantation forest development

- ❑ 16,186 stakeholders trained in different forestry and energy saving technologies country wide
- ❑ 246 Nyabyeya students qualified in the cert. and dip. programs
- ❑ **11,113,501 millions seedlings raised and distributed to communities and planted in 10,002.15ha.**
- ❑ **73ha of LFRs were planted and 1,100ha maintained.**
- ❑ **37 woodlots demonstrations established in strategic positions in various districts totaling to 37Ha.**
- ❑ 17 improved charcoal kilns and 15 fuel wood demonstration plantation in the cattle corridor districts.

2. Performance: Key Highlights

4. Inspection, Technical support, Compliance Monitoring and Enforcement.

- ❑ 117 of the 125 DLGs monitored, supervised for compliance to Wetlands policy, guidelines with at least 87% complying.
- ❑ 13 DLGs inspected for compliance to the forest guidelines with at least 66% complying
- ❑ 39 timber harvesting licenses were issued to pit-sawyers to regulate forest products transaction.
- ❑ WMD/EPPU conducted compliance monitoring of 86 sites, 214 cases registered in courts, 131 suspects arrested, 77 case files in courts, 18 convicted.

3. Performance trends:

Platinum indicators	Baseline	2013/ 14	2014 /15	2015/ 16	2016/ 17	2017/ 18.
<i>% national forest cover</i>	18	15	11	10	9.1	9.0
<i>% natural forest under strict nature reserve</i>	12	12	12	12	12	12
<i>% seedling survival for 3 years</i>	60	75	78	75	75.5	61.8
<i>% distance to collect firewood</i>	2km	?	?	0.7	?	?
<i>% forest reserves with Mgmt plans</i>	32	32	32	35	36	36
<i>% compliance with EIA certificate conditions</i>	60	70	66	70	70	78.5
<i>% safe waste disposal</i>	50	?	60	67	75	42.5
<i>% rainfall observation network.</i>	60	?	?	?	64	?
<i>% of weather observation stations operational and submitting data throughout the year. NEW INDICATOR</i>	?	?	?	?	?	56
<i>% national wetland coverage</i>	10.9	9.4	8.9	8.6	8.4	8.4
<i>% wetland area with Mgmt plans.</i>	0.9	4.4	5.9	10.3	14.4	18.1

4. Progress on Undertaking 1: Mainstreaming Environment into 5 high impact sectors

- ✓ **Completed the de-concentration ENR structure to mainstream ENR interventions beginning with Water Sanitation Sub-sector**
- ✓ **ToR for the Consultant to spearhead the undertaking is finalized by August 2018.**
- ✓ **Procurement of the Consultant on going**
- ✓ **Mainstreamed ENR and Climate change in Ministry of Finance Planning and Economic Development**

5. Challenges and Recommendations

1. Encroachment, occupation and issuance of titles: are affecting CFRs and LFRs, wetlands, R. banks and lakeshores.

- **Increase investment in re-opening, demarcating, maintaining and patrolling boundaries and restoration efforts.**
- **Strengthen political and technical oversight of District Development Committees, District Environment Committees and District Land Boards**
- **Increase EPPU staffing from 186 to the approved 600.**
- **Develop alternative livelihood options for forest, wetland, lakeshore and river bank for the adjacent communities**

5. Challenges and Recommendations

2. Illegal extraction of forest products on both private lands and in the reserves, wetland and river banks and Lake shore.

- **Institute a bar coding and forge-proof licensing system for tracking of timber movement.**
- **Fast track the timber export guidelines and timber grading standard to regulate timber export issue**
- **Strengthen and coordinate responses by EPPU, KCCA, LGs and MWE to monitor and regulate use of protected areas/zones.**

5. Challenges and Recommendations

3. Degradation from government programs:
large scale government programs are significant sources of environmental degradation

- **Fast track mainstreaming of ENR into government business**
- **Strengthen conditions of EIA approval by establishing joint technical experts in the process and post approval compliance monitoring.**
- **Implement offset policy including mitigation hierarchy**

5. Challenges and Recommendations

4. Impact of Refugee Settlement on ENR Host LGs

- ❑ A number of Refugee settlements are impacting negatively on ENR in the host districts through increased deforestation and encroachment of fragile ecosystems, poor waste management.
- **Fast track the preparation of Comprehensive Refugee Response Plan for the Water and Environment Sector and implement the plan.**
- **Establish woodlots and popularize fuel saving technologies in refugee settlements.**

5. Challenges and Recommendations

5. Rates of loss v levels of restoration:

- Forest loss is 33 times levels of reforestation; wetland loss is 70 times levels of restoration
- **Develop specific project to undertake massive restoration countrywide by both CG and LGs. (Strengthening Decentralized ENR at LGs)**
- **Develop realistic annual targets for reforestation and wetland restoration based on actual budgets.**
- **Review NDP II targets and rationalize upcoming NDP111 targets to bring them in line with actual performance.**

6. Key opportunity

- ❖ Make use of the current high level political support, the Land Inquiry Commission and the existing Land Registration process in MoLHUD to cancel titles issued in wetlands and forests**
- ❖ Make use of the ongoing NEMP and NEA, Forestry and Wetland Policies reviews and preparation of Bills to address all mandates overlaps and provide deterrent penalties to address non compliance.**
- ❖ Make use of the current Climate change funding window (Adaptation Fund and GCF) to develop projects for restoration of ENR**

6. Key opportunity

- ❖ **Operationalising the Tree Fund- feasibility study completed**

7. Proposed Undertaking

- ✓ **Complete undertaking number 1 on mainstreaming ENR and climate change into 5 high impact sectors**

Priority action

- ✓ **Develop and Operationalize a Feed back and Grievance handling mechanism for MWE and more specifically for ENR sub-sector**

End

Thank you

Merci

Apwoyo matek

Mwanyala naabi

Ashanti sana

Milesi mingi

Webaale munonga

Eyalama noi